



\$459,000

19527 SE 237th St
Maple Valley, WA 98038

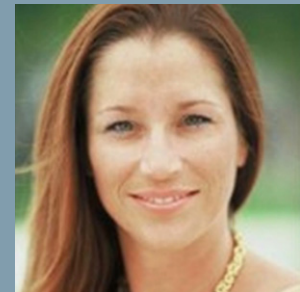
3 Bedrooms

1.75 Bathroom

Built in 1925

View: Territorial

MLS # 1592805



Morgan Parker

MorganParker@HawkinsPoe.com

morganaparker.com

Cell: (253) 235-5526

Office: (253) 274-8981

This sweet 1800 sq ft home is located on a shy half acre lot within the desirable Tahoma School District. Main level has 1 bedroom plus extra room for office or den and 1 full bathroom. Downstairs has great warmth and space boasting a family room with wood burning stove, two large bedrooms with plenty of closet space, a must see "spa like" 3/4 bath and laundry. Oversized 2 car garage with plenty of extra storage for tools and equipment. Must see to appreciate this lovely property. Room for

Listing provided by NWMLS & Hawkins Poe. The information contained herein has been obtained through sources deemed reliable but cannot be guaranteed as to its accuracy. Any information of special interest should be obtained through independent verification

